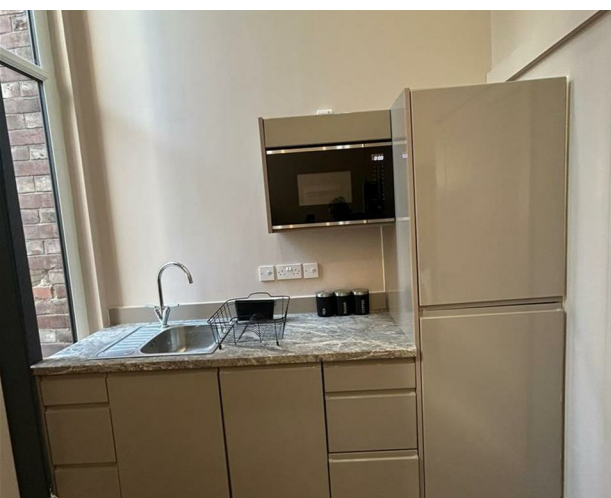


APT 14 - Athenaeum Residence, 147 - 157 The Headrow,
LEEDS, LS1 5EW
£1,050 Per month

V&L
PROPERTIES



APT 14 - Athenaeum Residence, 147 - 157 The Headrow, LEEDS, LS1 5EW

£1,050 Per month

Council Tax Band: C

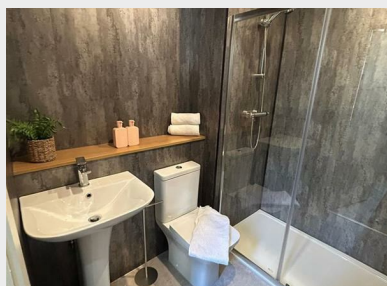
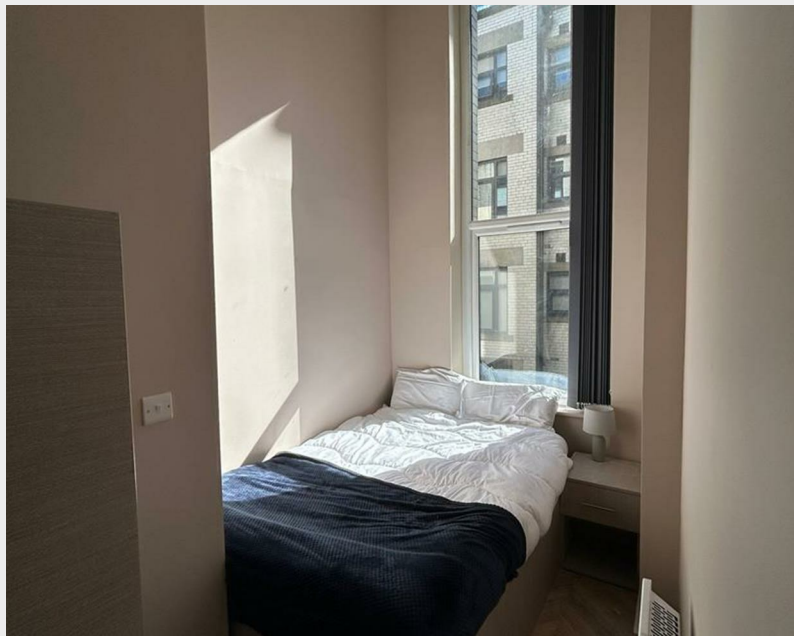
AH14

Welcome to this charming apartment located at 147A The Headrow, Leeds, LS1 5EW. This stylish residence offers a unique blend of comfort and modern living, making it an ideal choice for those seeking a vibrant urban lifestyle.

As you enter, you will be greeted by a bright and spacious open-plan living area, perfect for both relaxation and entertaining. This inviting space allows for seamless interaction with friends and family, creating a warm atmosphere for gatherings. The modern kitchen is fully equipped with all the essentials, making it easy to whip up culinary delights and enjoy cooking adventures.

The stylish apartment provides a cozy retreat that is both functional and aesthetically pleasing. This space is designed to be your perfect hangout, offering a peaceful escape from the hustle and bustle of city life. The





22 Regent Street
 Leeds
 LS2 7QA
 01133 225737
info@vgl-properties.co.uk
vgl-properties.co.uk

Energy Efficiency Rating		Current	Potential
<i>Very energy efficient - lower running costs</i>			
(92 plus) A			
(81-91) B			
(69-80) C		78	78
(55-68) D			
(39-54) E			
(21-38) F			
(1-20) G			
<i>Not energy efficient - higher running costs</i>			
England & Wales		EU Directive 2002/91/EC 